



Electronic Tool Control

Serving your business with quality service and tools for over 20 years

Our story...

Henchman is an international single-source supplier of premium hand and power tools, specialised tooling solutions and custom-designed toolkits renowned for their superb quality finish.

Henchman was established in the beginning of 1999 in Newcastle, NSW, Australia. The initial focus of our business was on the Electronics industry where Henchman is well recognized today as the national leader in the supply of customized technician toolkits. Due to our proximity to a large airbase, we were drawn quickly into the aerospace industry within the first year of business to provide toolkitting solutions. This has grown to become an extremely significant part of our business for both local and international customers. Since then, Henchman has grown from strength to strength and expanded globally with branch offices in the US, New Zealand, Dubai and Singapore, while still remaining an Australian owned family business.

At Henchman we understand that quality products and timely delivery is largely what our customers demand and deserve. We have gained respect, loyalty and presence in the industry, operating a Quality Management System and being accredited to ISO 9001, reinforcing our dedication to customer service.

We have distribution access to 65,000 stock lines of world renowned tool brands – with a growing range of our own Henchman brand.

Our vision...

- Commitment to impeccable customer service
- Positivity, honesty and integrity
- To be recognised as a leading supplier of tooling solutions, toolkits and tools across all industries



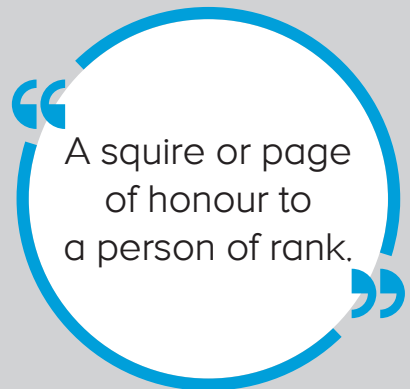
henchman
/'hɛn(t)ʃmən/

Noun: henchman; plural noun: henchmen

Similar: Follower, supporter, assistant, aide, helper, adjutant, right-hand man, minder, protector

Opposite: Leader

Origin: Middle English, from Old English hengest 'male horse' + man, the original sense being probably 'groom'



helping you to work,
professionally



Electronic Tool Control

HenchmanTRAK™ records every user and the tools or toolkits issued or returned, providing accountability at all times, reducing the number of misplaced tools and increasing efficiency. Unlike other Electronic Tool Control Systems that use scanning systems or require tool modifications, kabTRAK™ is fitted with a highly sensitive modular sensor system developed by Henchman (Patent Pending).

Status of multiple units is viewable on central cloud dashboard, where monitoring and reporting of transactions or unserviceable tools is available, making service scheduling of calibratable tools simple.

HENCHMANTRAK



Your Benefits:

- **Fast & Effortless:** Issue/return of tools in seconds, identification of missing tools with one click on the screen to view transactions, monitoring of tools broken/due for service and list to order replacements
- **Safe:** Reliable check that the toolkit is complete (Part 145/FOD)
- **Transparent:** Instant report if tools are missing, or service/replacement is needed – on the screen and in the app
- **Efficient:** Reduction of time wasted to issue/return tools and look for misplaced tools
- **Custom-build:** Fully customizable and scalable to your requirements



Find out more on henchmanTRAK.com



Tool Control Systems



- **kabTRAK™** is a premium quality tool cabinet fitted with our advanced sensing system (Patent Pending), designed to make tool control as effortless, reliable and simple for the engineer as it can possibly be. It tracks the issue and return of hand tools and smaller items – right at the point of use.
- **portaTRAK™** is a unique system to track the issue and complete return of portable toolkits using accurate weight measurement.
- **cribTRAK™** bridges the gap using RFID tagging and/or barcoding to monitor manual tool movement. This system is used to track the issue and return of portable toolkits or power tools from/to a toolcrib.

The patent pending kabTRAK™ system is a smart toolbox that ensures fast and efficient electronic automated tool control. Mechanical hand and power tools are laid out in custom-cut two-coloured foam inlays that make it easy to identify, where each tool belongs, and if a tool is missing.

The interactive touch display is easy to use, tracking the issue and return of hand tools and smaller items – directly at your job site.



How it works

When an authorised user presents their access card, they are then requested to select their proposed work location/tail number. The cabinet is then unlocked. As any drawer is opened, the screen will instantly display a live infographic with the status of each tool – tools available, tools issued to other users and tools issued to current user, making it easy to return tools to the correct tool pocket. Once drawers are closed, the user can instantly lock the cabinet at the push of a button. Should the cabinet be accidentally left unlocked it will automatically lock after a short lapse of time. The status of “tools out” will then show on the guest screen



Cabinet sizes

The kabTRAK™ can be fitted with any combination of drawers providing they total exactly the cabinets “useable height”:

100mm Height Drawer – actual internal size of 70mm H x 600mm D (Widths shown below)

150mm Height Drawer – actual internal size of 120mm H x 600mm D (Widths shown below)

225mm Height Drawer – actual internal size of 195mm H x 600mm D (Widths shown below)

300mm Height Drawer – actual internal size of 270mm H x 600mm D (Widths shown below)

Part No.	Dimensions (excluding wheels and tablet)			Cabinet “Useable Height” (mm)	Standard Drawer Combination	Internal Drawer width
	Width (mm)	Height (mm)	Depth (mm)			
KABTRAK-0	710	810	755	675	3x100 + 1x150 + 1x225	600
KABTRAK-1	1010	810	755	675	3x100 + 1x150 + 1x225	900
KABTRAK-2	1010	1185	755	1050	9x100 + 1x150	900
KABTRAK-3	1410	1185	755	1050	9x100 + 1x150	1200

Some distinct benefits of the kabTRAK™ system

- The kabTRAK™ can manage almost any possible tool variety, for example cutting tools or extremely small tools, and requires no tool modification to work.
- No delay time: Every tool movement is recorded instantaneously as a tool is lifted or returned, with no requirement for the drawer to be fully extended and no scanning time.
- Mobility: The system can be used outside and has a battery backup.
- Calibration Management: Restricts use of any tool that has expired, giving an optional step to ensure the user checks the actual date on the tool when issuing, and an early warning to the supervisor of any imminent expiry.
- Broken Tools: Should a tool be broken during use, on return it can be quickly marked “unserviceable” which will then restrict further use of this tool. A notification can be sent to the supervisor.
- Wearing tools: The kabTRAK™ can be kitted up with a debris catchment bin. Should the tool be not only unserviceable but shattered into pieces, a return of debris can be allowed for.
- Consumable items: The kabTRAK™ can maintain a record of what has been consumed, whilst allowing return of any non-consumed items.
- Restocking and Re-ordering: The dashboard or direct messages to the supervisor provide updates of consumed and unserviceable tools, making restocking and re-ordering simple.
- No camera: The kabTRAK™ system specifically has no camera fitted to meet requirements of restricted/classified areas.

Comparison of kabTRAK™ with other known technologies

	kabTRAK™ technology	Camera technology	RFID technology
Tool movement detection whilst drawer is open	✓	✗	✗
No scanning time to capture transactions	✓	✗	✗
No tool modification needed	✓	✓	✗
No light interference	✓	✗	✓
No camera fitted - suiting restricted areas	✓	✗	✓
No ongoing maintenance, eg: adjustment to sensitivity of system or retagging of tools	✓	✗	✗

Three key reasons for selecting a kabTRAK™

There are even more benefits and unique features which could be mentioned.

We recommend a demonstration, however in our experience, there are three key reasons customers choose a kabTRAK™:

- The kabTRAK™ system operates as fast as you can possibly use it - nothing is faster and more user friendly.
- The technology does not require ongoing adjustment (service cost) to maintain its optimum performance. The technology is as optimized on “Day 1” as it will be 5 years down the track.
- Flexibility is extremely high on the list of our customers specific requirements - from tools and cabinet sizes through to software and reporting.

portaTRAK™

The portaTRAK™ is a unique tracking system for the fast issue and return of portable toolkits using accurate weight measurement - down to detecting a missing 1/4 inch drive screwdriver bit.



How it works

After the user signs in with a tap of his card, he places a toolkit on the scales that will be recognized by the portaTRAK™ using an RFID tagging system. The weight of the kit is checked against the recorded weight, and if it matches (within a 4 gram tolerance) the kit will be issued or returned.

Seamless Integration

Multiple portaTRAK™ units can be used seamlessly and they can also be used alongside kabTRAK™ and cribTRAK™. This allows us to tailor a tool tracking solution to your specific requirements.



For more information on the DURABOOK tablets we use with our HENCHMANTRAK systems, please contact us.

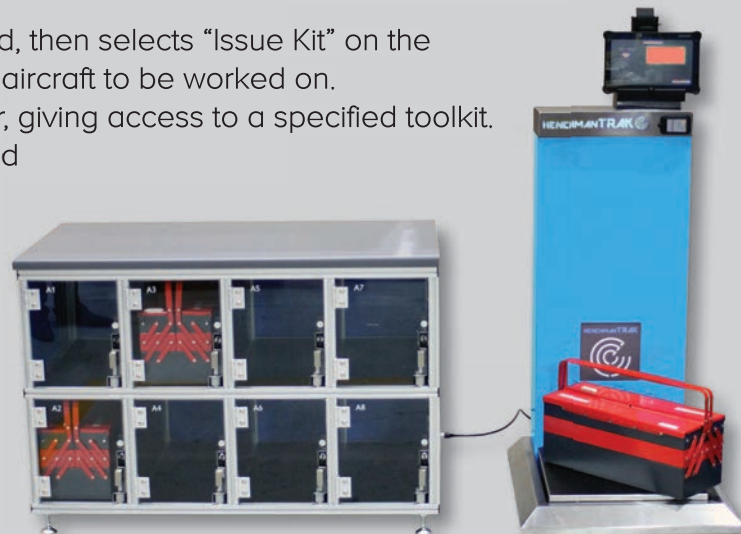
lokkaTRAK™

The lokkaTRAK™ extends the capability of the portaTRAK™. It incorporates a locker system, providing an unmanned and secure storage of portable kits.

How it works

The user signs in with a swipe of his card, then selects "Issue Kit" on the touch screen and the tail number of the aircraft to be worked on. The lokkaTRAK™ will then open a locker, giving access to a specified toolkit. The kit is checked according to recorded weight using the portaTRAK™ loadcell.

When returning the kit, the correct weight will be verified and if correct will accept opening a locker door to return. Once the kit is replaced and locker door is closed, the transaction is then complete.



cribTRAK™

The cribTRAK™ bridges the gap using RFID tagging and/or barcoding to monitor manual tool movement with a scanning system.

This is the simplest way to track items often stored in a toolcrib, as well as large items that do not fit into portable toolkits or a kabTRAK™.



How it works

To use the cribTRAK™, the user swipes their access badge and enters an aircraft registration number. The user then scans the barcode on the item using the built in scanner to issue or return the item.

The cribTRAK™ has a green display when all tools are present or red when any tools are out. When tools are out, simply touching the display opens a list of tools issued and the user that took them.



hENCHMANTRAK™

The hENCHMANTRAK™ software is a powerful bespoke user interface, with a proven SQL database for records of tooling. Each unit has live integration with a central cloud database. Responsive web portal access to this database provides managers with a live snapshot of tool status including which aircraft they are being used on.

The hENCHMANTRAK™ smartphone App is simplifying the management of portable kits on the run.

Administrator functions

- User access management
- Entering of aircraft registration numbers
- Recording of serviceable and calibrated tooling
- Extraction of standard or customized reports

The hENCHMANTRAK™ system can work with existing access badges, or additional tags can be provided. At HENCHMAN we understand that every customer has different requirements and we are able to integrate at certain levels with 3rd party systems.



USA

Henchman Corporation
14250 Judicial Road
Burnsville MN 55306

Tel: 1-800-408-1082

sales@henchmanusa.com

www.henchmanusa.com

Australia

Henchman Group
8 Pavilion Place
Cardiff NSW 2285

Tel: +612 4956 7111

sales@henchman.com.au

www.henchman.com.au

