

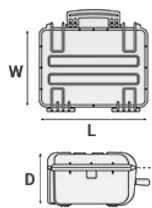
Mod. 4216.B E

COPOLYMER POLYPROPYLENE WATERPROOF CASE

Medium size waterproof cases.



METRIC MM-KG-C°



INTERNAL DIMENSIONS

L LENGTH	420 mm
W WIDTH	300 mm
D DEPTH	160 mm
LID	35 mm
BASE	125 mm

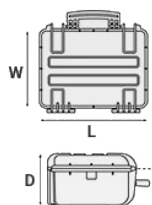
EXTERNAL DIMENSIONS

L LENGTH	457 mm
W WIDTH	367 mm
D DEPTH	183 mm

OTHER DATA

WEIGHT EMPTY	2.4 Kg
WEIGHT WITH FOAM	3 Kg
WEIGHT WITH CUSTOM FOAM	Kg
VOLUME	20 lt
BUOYANCY	14.2 Kg/max
OPERATING TEMPERATURE	°C min -33 / max +90

IMPERIAL IN-LBS-F°



INTERNAL DIMENSIONS

L LENGTH	16 9/16 in
W WIDTH	11 13/16 in
D DEPTH	6 5/16 in
LID	1 3/8 in
BASE	4 15/16 in

EXTERNAL DIMENSIONS

L LENGTH	18 in
W WIDTH	14 7/16 in
D DEPTH	7 3/16 in

OTHER DATA

WEIGHT EMPTY	5.29 lbs
WEIGHT WITH FOAM	6.61 lbs
WEIGHT WITH CUSTOM FOAM	lbs
VOLUME	5.28 gal
BUOYANCY	31.30 lbs/max
OPERATING TEMPERATURE	°F min -27.4 / max +194

FEATURES



INTERNAL SLOTS

Internal slots for optional panel mounting brackets or panel mounting rings



JAM FREE LATCHES WITH EASY-OPENING MECHANISM

(from model 3818 on)



PVC WATERPROOF I. D. REMOVABLE LABEL

(Art. LABELCOVER + nr. art.)



LID CAN BE SET TO SLIDE-OFF

By releasing the back screw, lid becomes set to slide-off when opened at 70°



STAINLESS STEEL REINFORCED PADLOCKABLE POINTS

4 stainless steel clip-covers on the two frontal outer padlock points, to grant a better resistance to abrasion.



ABILITY TO STACK

The special design of the bottom and the lid feet, grants a perfect stackability.



AUTOMATIC PURGE VALVE

Automatic pressure release valve.

ACCESSORIES



LID PANEL WITH ORGANIZED POUCHES

PANEXPL42

Practical and robust lid panel with pouches, ideal for small accessories and documents. Suitable for cases 4209 and 4216. Color: black.



CONVOLUTED FOAM SET FOR CASE 4209 AND 4216

LIDFOAM.42

(includes 2 pcs.)



FOAM SET FOR CASE 4216

FOAM.4216

Layers of pre cubed foam for the bottom and convoluted foam for the lid. The pre-cubed foam allows the user to tailor the insert to their own individual requirement. The convoluted foam in the lid helps to firmly keep the stored equipment when the case is closed. Available for 4216 model. Color: dark grey. [DOWNLOAD PDF](#)



LAPTOP PADDED BAG

BAG-PC42

Highly durable padded bag with rubber coated handle and waterproof zipper with lockable Velcro pull zipper. Practical external front pouch for documents, removable shoulder strap and rubber feet on the bottom to grant better grip. Provided with internal cable pouch. Ideal for laptop up to 15". Suitable for case 4209. Color: black/red.



PROTECTIVE SLEEVE FOR PC 15"-15.6"

TOP ENVELOPE 15

Protective padded notebook sleeve. Protects the laptop from shocks and scratches.



PROTECTIVE SLEEVE FOR PC 13"-13.3"

TOP ENVELOPE 13

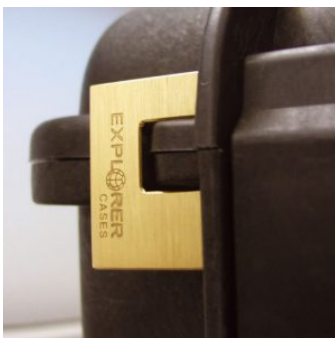
Protective padded notebook sleeve. Protects the laptop from shocks and scratches.



ADJUSTABLE SHOULDER KIT

SHOULDERKIT.U

The kit is composed by: shoulder strap with plastic endings, 4 threaded knots, 2 metal plates. (min. extension 106 cm, max. extension 201 cm). The strap comes with the Explorer logo. Suitable for models: 1908, 1913, 2209, 2214, 3005, 4412, 4419, 5117, 9413, 11413 and 13513.



PATENTED HEAVY DUTY BRASS PADLOCK WITH KEYS

EXPL PADLOCK

Designed to fit snug to the Explorer case mould so as not to swing out



PATENTED COMBINATION PADLOCK

EXPL COMBILOCK

Designed to fit snug to the Explorer case mould so as not to swing out



HANDY BACKPACK CARRYING SYSTEM FOR CASES

BACKPACK L

Made of robust tear resistant polyester. Designed with adjustable and comfortable padded shoulder straps and belt.

Provided with an external pocket for small accessories, with Velcro strap.

Ideal wherever a free hand movement is required, like in outdoor activities, extreme sports, emergency, rescue, trekking, industrial field, etc.

Suitable for models 3317W, 4412, 4419 and 4820.

Color: black.



BLIND INSERT

KIT.EXPL.PLUGS

Kit includes 6 pcs.

Whenever the slots are not going to be used for in-built applications, those can be closed by blind inserts that will give the case a better and finished interior look.



TSA APPROVED PADLOCK WITH COMBINATION

EXPL TSA.DIGILOCK

The new TSA approved padlocks allow tsa® airport security agents to open the case without destroying the lock. TSA agents are trained to recognize the travel sentry certified logo and should not break the case lock.



METAL BRACKET

KIT SUPP.EXPL.

Kit includes 6 pcs.

All models (except for the 1908) are internally equipped with specific slots, to apply the optional metal or plastic brackets which provide either a panel's fixing points or a fix mechanical joint inside the case, to build more complete applications. This way the case becomes a real workstation, rather than just a carrying container. As the panel mounting brackets are mechanically fixed by screws, they can be removed when necessary. The dedicated screws allow the case to remain waterproof, and help the panels to be removed easily and quickly



PLASTIC BRACKET

KIT SUPP.PLAST.

Kit includes 6 pcs.

All models (except for the 1908) are internally equipped with specific slots, to apply the optional metal or plastic brackets which provide either a panel's fixing points or a fix mechanical joint inside the case, to build more complete applications. This way the case becomes a real workstation, rather than just a carrying container. As the panel mounting brackets are mechanically fixed by screws, they can be removed when necessary. The dedicated screws allow the case to remain waterproof, and help the panels to be removed easily and quickly

SPARE PARTS



Metal clips for mod.

**3005-4209-16-4412-19-4820-5140-5218-21-5325-26-5822-23-33-762
6-30-35-41-7726-45-7814-9413-33-10826-40-11413-13513-27-15416**

KIN.1214

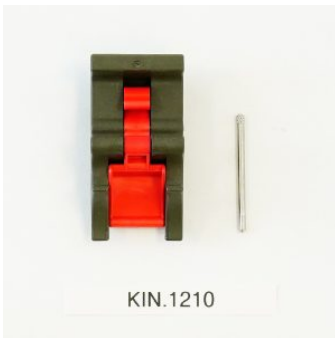
Includes: 4 metal reinforcements



Red trigger pull release latch for models 4209-4216-5218-5221

KIN.1211

Includes: 1 desert tan latch 1 fixing pin



Red trigger pull release latch for models 4209-4216-5218-5221

KIN.1210

Includes: 1 military green latch 1 fixing pin



Rubber coated handle for models 4216-5218-5221

KIN.1255

Includes: 1 orange handle 2 fixing pins



Rubber coated handle for models 4216-5218-5221

KIN.1207

Includes: 1 desert tan handle 2 fixing pins



Rubber coated handle for models 4216-5218-5221

KIN.1206

Includes: 1 military green handle 2 fixing pins



Red trigger pull release latch for models 4209-4216-5218-5221

KIN.1209

Includes: 1 black latch 1 fixing pin



Rubber coated handle for models 4216-5218-5221

KIN.1205

Includes: 1 black handle 2 fixing pins



Polyurethane o-ring seal for models 4209 and 4216

KIN.1297

Includes: 1 o-ring



KIN.0969

Transparent PC name tag for mod.

**4209-4216-4412-4419-4820-5218-5221-5325-5326-5822-5823-5833-
7626-7630-7635-7641-7726-7745-7814-9413-9433-10826-10840-114
13-13513-13527-15416-MUB65**

KIN.0969

Includes: 1 transparent name tag holder



Easy-opening latch for models from 3818 up

KIN.0446

Includes:

1 black latch

1 fixing pin



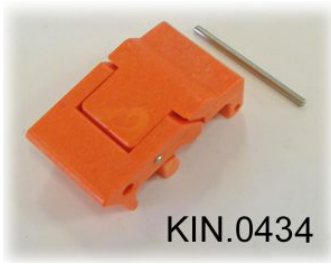
Easy-opening latch for models from 3818 up

KIN.0435

Includes:

1 military green latch

1 fixing pin



Easy-opening latch for models from 3818 up

KIN.0434

Includes:
1 orange latch
1 fixing pin



Easy-opening latch for models from 3818 up

KIN.0883

Includes:
1 sand latch
1 fixing pin



Manual pressure release valve for models from 2712 up (except mod. 3005)

KIN.0495

Includes: 1 black purge valve (+ o-ring + pin) 1 threaded bush 1 snap ring (Seeger)