

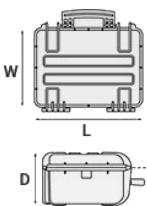
## Mod. 7814.B

### COPOLYMER POLYPROPYLENE WATERPROOF CASE

Compact and maneuverable weapon case. Ideal for protecting, storing and transporting short barreled rifles and compact machine guns.



METRIC MM-KG-C°



#### INTERNAL DIMENSIONS

L LENGTH	780 mm
W WIDTH	350 mm
D DEPTH	145 mm
LID	42 mm
BASE	103 mm

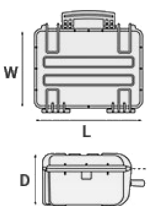
#### EXTERNAL DIMENSIONS

L LENGTH	846 mm
W WIDTH	427 mm
D DEPTH	167 mm

#### OTHER DATA

WEIGHT EMPTY	5.50 Kg
WEIGHT WITH FOAM	6.40 Kg
WEIGHT WITH CUSTOM FOAM	Kg
VOLUME	39.6 lt
BUOYANCY	25.3 Kg/max
OPERATING TEMPERATURE	°C min -33 / max 90

IMPERIAL IN-LBS-F°



#### INTERNAL DIMENSIONS

L LENGTH	30 11/16 in
W WIDTH	13 3/4 in
D DEPTH	5 11/16 in
LID	1 5/8 in
BASE	4 1/16 in

#### EXTERNAL DIMENSIONS

L LENGTH	33 5/16 in
W WIDTH	16 13/16 in
D DEPTH	6 9/16 in

#### OTHER DATA

WEIGHT EMPTY	12.12 lbs
WEIGHT WITH FOAM	14.11 lbs
WEIGHT WITH CUSTOM FOAM	lbs
VOLUME	10.46 gal
BUOYANCY	55.77 lbs/max
OPERATING TEMPERATURE	°F min -27.4 / max 194

## FEATURES



### **AUTOMATIC VALVE**

Automatic pressure release valve.



### **INTERNAL SLOTS**

Internal slots for optional panel mounting brackets or panel mounting rings



### **LARGE FRONT HANDLE**



### **JAM FREE LATCHES WITH EASY-OPENING MECHANISM**

(from model 3818 on)



**SEALING O-RING**  
(Art. NEOSEAL + nr. art.)



**PVC WATERPROOF I. D. REMOVABLE LABEL**  
(Art. LABELCOVER + nr. art.)



**STAINLESS STEEL REINFORCED PADLOCKABLE POINTS**  
4 stainless steel clip-covers on the two frontal outer padlock points, to grant a better resistance to abrasion.



**ABILITY TO STACK**  
The special design of the bottom and the lid feet, grants a perfect stackability.



### **SIDE HANDLES**

Two side handles allow an easy transportation.



### **PRACTICAL HANDLE**

## ACCESSORIES

### CONVOLUTED FOAM SET FOR CASE 7814

LIDFOAM.78  
(includes 2 pcs.)



### FOAM SET FOR CASE 7814

FOAM.7814  
Layers of pre cubed foam for the bottom and convoluted foam for the lid. The pre-cubed foam allows the user to tailor the insert to their own individual requirement. The convoluted foam in the lid helps to firmly keep the stored equipment when the case is closed. Available for 7814 model. Color: dark grey. [DOWNLOAD PDF](#)



### PADDED GUN BAG FOR CASE 7814

GSLEEVE 78  
Designed to secure your valuable rifle and accessories, the new G Sleeve bags provide protection in a highly mobile condition. A lightweight ruggedized 600D polyester outer fabric protects from humidity, while a padded interior keeps your rifle well protected. The internal rifle retention straps and the neoprene side flaps keep your firearm properly fixed.



### PROTECTIVE SLEEVE FOR PC 15"-15.6"

TOP ENVELOPE 15  
Protective padded notebook sleeve. Protects the laptop from shocks and scratches.





## PROTECTIVE SLEEVE FOR PC 13"-13.3"

TOP ENVELOPE 13

Protective padded notebook sleeve. Protects the laptop from shocks and scratches.



## PADDED GUN BAG FOR CASES 7630-7641 AND 7814

GBAG 76

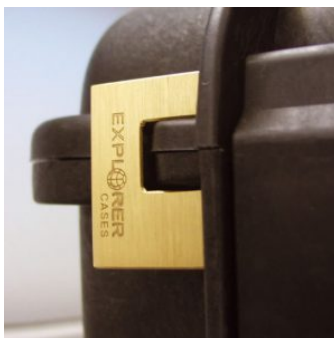
Padded gunbag to protect SMG guns. Inclusive of a number of features to secure rifles and shotguns together with necessary accessories and ammunitions. GBAG 76 is designed to perfectly fit into Explorer Cases models 7630 (up to 6 pieces) 7641 (up to 8 pieces) and 7814 (1 piece). The gunbag is built with durable, 600D tear resistant polyester and robust zipper with lockable Velcro pull zipper. Designed to protect and transport critical gear. This gun bag comes with a removable shoulder strap. Personal ID window on the backside and front removable hook-and-loop screen-printable band.



## ADJUSTABLE SHOULDER KIT

SHOULDERKIT.U

The kit is composed by: shoulder strap with plastic endings, 4 threaded knots, 2 metal plates. (min. extension 106 cm, max. extension 201 cm). The strap comes with the Explorer logo. Suitable for models: 1908, 1913, 2209, 2214, 3005, 4412, 4419, 5117, 9413, 11413 and 13513.



## PATENTED HEAVY DUTY BRASS PADLOCK WITH KEYS

EXPL PADLOCK

Designed to fit snug to the Explorer case mould so as not to swing out



### PATENTED COMBINATION PADLOCK

EXPL COMBILOCK

Designed to fit snug to the Explorer case mould so as not to swing out



### BLIND INSERT

KIT.EXPL.PLUGS

Kit includes 6 pcs.

Whenever the slots are not going to be used for in-built applications, those can be closed by blind inserts that will give the case a better and finished interior look.



### TSA APPROVED PADLOCK WITH COMBINATION

EXPL TSA.DIGILOCK

The new TSA approved padlocks allow tsa® airport security agents to open the case without destroying the lock. TSA agents are trained to recognize the travel sentry certified logo and should not break the case lock.



### METAL BRACKET

KIT SUPP.EXPL.

Kit includes 6 pcs.

All models (except for the 1908) are internally equipped with specific slots, to apply the optional metal or plastic brackets which provide either a panel's fixing points or a fix mechanical joint inside the case, to build more complete applications. This way the case becomes a real workstation, rather than just a carrying container. As the panel mounting brackets are mechanically fixed by screws, they can be removed when necessary. The dedicated screws allow the case to remain waterproof, and help the panels to be removed easily and quickly



## PLASTIC BRACKET

KIT SUPP.PLAST.

Kit includes 6 pcs.

All models (except for the 1908) are internally equipped with specific slots, to apply the optional metal or plastic brackets which provide either a panel's fixing points or a fix mechanical joint inside the case, to build more complete applications. This way the case becomes a real workstation, rather than just a carrying container. As the panel mounting brackets are mechanically fixed by screws, they can be removed when necessary. The dedicated screws allow the case to remain waterproof, and help the panels to be removed easily and quickly



## SPARE PARTS



### Metal clips for mod.

3005-4209-16-4412-19-4820-5140-5218-21-5325-26-5822-23-33-762  
6-30-35-41-7726-45-7814-9413-33-10826-40-11413-13513-27-15416

KIN.1214

Includes: 4 metal reinforcements



### Polyurethane o-ring seal for model 7814

KIN.1389

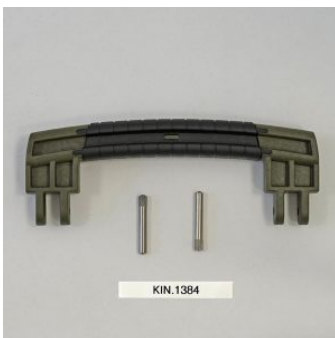
Includes: 1 o-ring



### Grey trigger pull release latch for models 7814-9413-9433-11413-13513-13527

KIN.1283

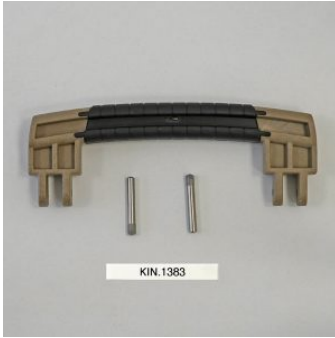
Includes: 1 black latch 1 fixing pin



### Rubber coated handle for model 7814

KIN.1384

Includes: 1 military green handle 2 fixing pins



**Rubber coated handle for model 7814**

KIN.1383

Includes: 1 desert tan handle 2 fixing pins



**Rubber coated handle for model 7814**

KIN.1382

Includes: 1 black handle 2 fixing pins



**Transparent PC name tag for mod.**

**4209-4216-4412-4419-4820-5218-5221-5325-5326-5822-5823-5833-  
7626-7630-7635-7641-7726-7745-7814-9413-9433-10826-10840-114  
13-13513-13527-15416-MUB65**

KIN.0969

Includes: 1 transparent name tag holder

KIN.0969



**Side handle for models**

**5325-5326-5822-5823-5833-7630-7814-13513-13527-15416**

KIN.0426

Includes: 1 orange handle 2 fixing pins

KIN.0426



**Side handle for models**

**5325-5326-5822-5823-5833-7630-7814-13513-13527-15416**

KIN.0880

Includes: 1 sand handle 2 fixing pins



**Side handle for models**

**5325-5326-5822-5823-5833-7630-7814-13513-13527-15416**

KIN.0412

Includes: 1 black handle 2 fixing pins



**Side handle for models**

**5325-5326-5822-5823-5833-7630-7814-13513-13527-15416**

KIN.0448

Includes: 1 military green handle 2 fixing pins