

3 AA BATTERIES

INTRINSICALLY SAFE DUAL-LIGHT FLASHLIGHT

XPP-5422GMX

NIGHTSTICK[®]
Life Depends on Light™



DUAL-LIGHT

300-lumen Dual-Light provides simultaneous **flashlight and floodlight** operation

**CLASS I
DIV 1**

**IP-67
DUST/WATER
PROOF**

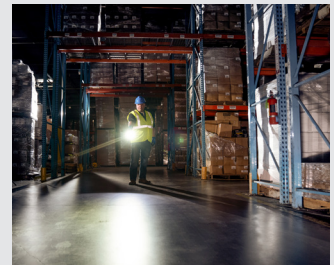
**INTEGRATED
HEAVY-DUTY
MAGNET**



Simultaneous **flashlight and floodlight** operation



Powerful base magnet allows "hands-free" use



Sharp focused flashlight beam



Durable polymer body is **impact & chemical resistant**



300 LUMENS

1-800-233-2155 • 1-469-326-9400 • nightstick.com

© 2021 Bayco Products Inc. Items shown are intended as a visual representation for informational purposes only and are subject to change without notice. Visit nightstick.com for product updates.

INTRINSICALLY SAFE DUAL-LIGHT FLASHLIGHT

3 AA BATTERIES (not included)

ITEM NUMBER/UPC

- XPP-5422GMX, UPC 0 17398 80585 8

MARKET APPLICATIONS

- Hazardous work environments, industrial

CERTIFICATIONS

- ETLus, CE, UKCA

CASE MATERIAL

- Engineered polymer

LUMENS/RUNTIME

FLASHLIGHT

-235L, 14 hrs. runtime

FLOODLIGHT

- 130L, 20 hrs. runtime

DUAL-LIGHT

- 300L, 10 hrs. runtime

CANDELA

- 7,970

BEAM DISTANCE

- 187 m

WATER RATING

- IP-67 dustproof / waterproof

DROP RATING

- 2 meters

DIMENSIONS

- LENGTH: 7.2 in (183 mm)

- HANDLE DIAMETER: 1.1 in x 1.5 in (28 mm x 38 mm)

- HEAD DIAMETER: 1.8 in (46 mm)

- WEIGHT: 6.9 oz (196 g)

POWER SOURCE

- AA batteries (not included)

WARRANTY

- Limited lifetime

WHAT'S INCLUDED

- Flashlight

- Removable lanyard

- Instruction manual

FL 1 STANDARD	SPOT	FLOOD	DUAL-LIGHT
	235 LUMENS	130 LUMENS	300 LUMENS
	14h	20h	10h
	187m		
	7970cd		
	2m		
	1m		

Bayco Products, Inc.
640 S. Sanden Blvd.
Wylie, TX 75098

XPP-5422GMX



ID 4003544
INTRINSICALLY SAFE
SECURITE INTRINSEQUE



CLASS I DIV 1 GRPS A-D T3
CLASS II & III DIV 1 GRPS E-G T135C
CLASS I ZONE 0 IIC T3
CLASS II ZONE 20 IIC T135C

-20°C ≤ Tamb ≤ +40°C
1.5V/Cell AA Alkaline

CERTIFIED

